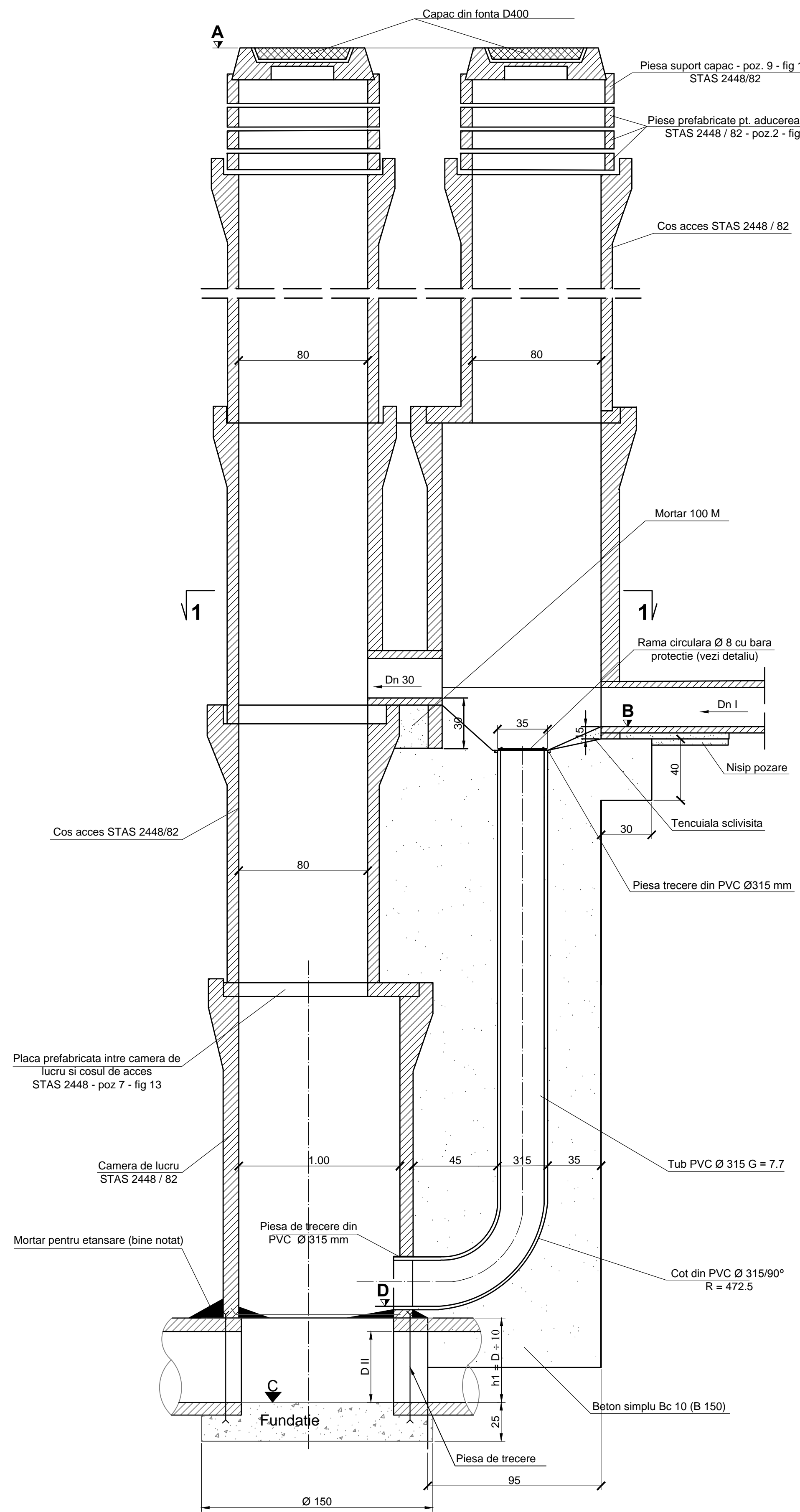


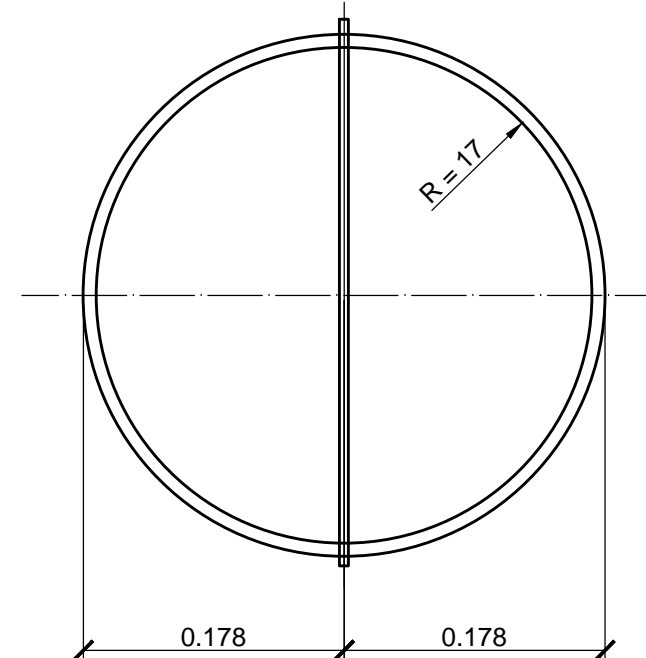
SECTIUNE 2 - 2

sc. 1 : 20



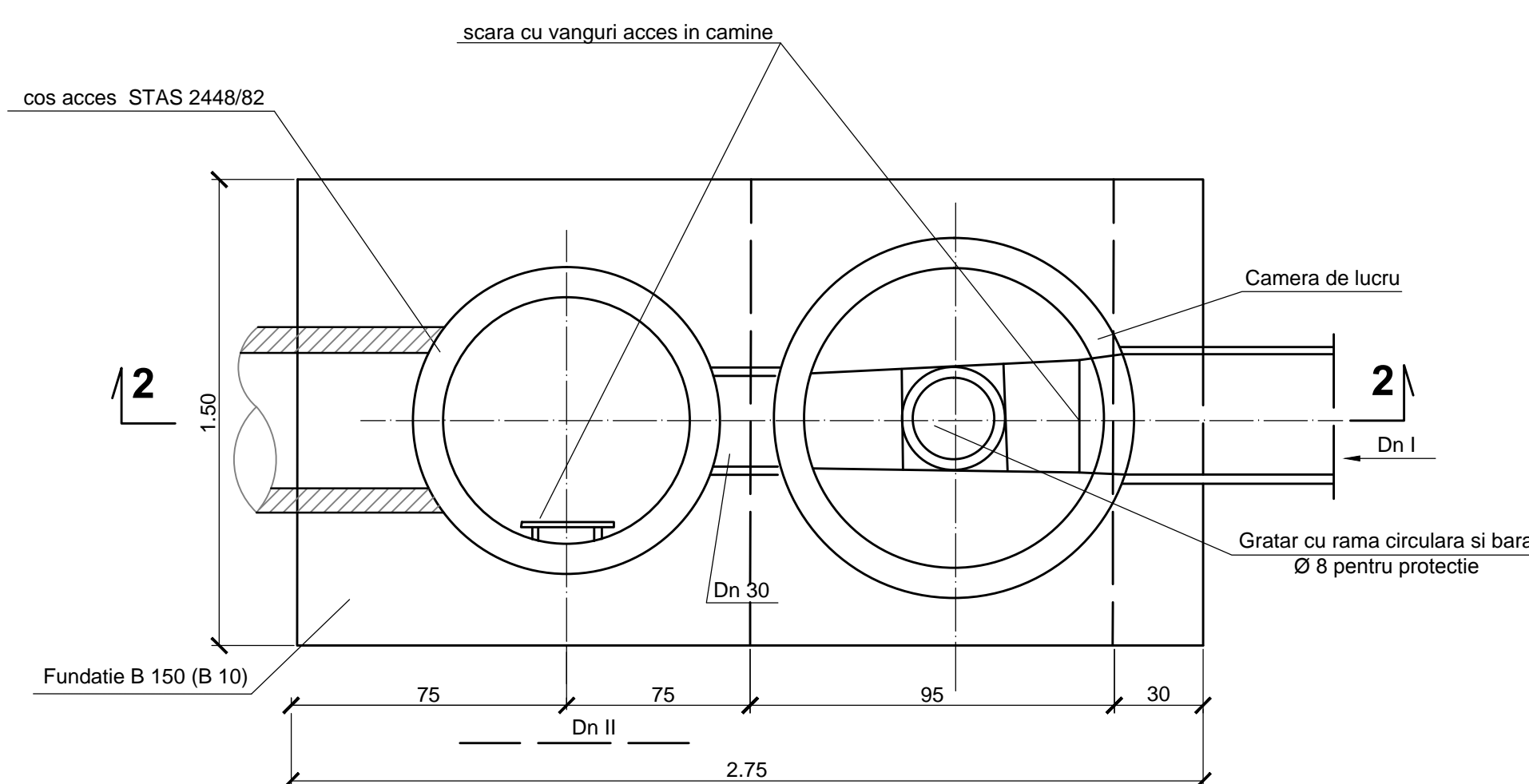
DETALIU RAMA CIRCULARA Ø 8
CU BARA DE PROTECTIE

sc. 1 : 5



SECTIUNE 1 - 1

sc. 1 : 20



NOTA:

- Constructorul este obligat sa verifice cotele si sa comunice sefului de proiect inainte de inceperea executiei eventualele nepotriviri.
- Cerinta de calitate minima corespunzatoare nivelului de performanta este A1 si B9 conform H.G. 925-95.
- Categoria de importanta este "normala" (C).

Nume Strada	Nr. Camin	Cota teren	Diametru conducta sosire	Diametru conducta plecare	Cota radier sosire	Cota radier plecare	Adancime camin
Driglovat	CRP1	399.84	250	250	398.27	397.09	2.8
	CRP2	393.64	250	250	392.09	390.59	3.1
	CRP3	387.17	250	250	385.59	384.60	2.6
	CRP4	381.78	250	250	379.60	378.60	3.2
	CRP5	375.66	250	250	373.60	372.60	3.1
	CRP6	370.11	250	250	367.60	366.06	4.1
	CRP7	365.08	250	250	363.56	361.83	3.3
	CRP8	362.33	250	250	360.83	358.98	3.3
	CRP9	358.94	250	250	357.48	356.39	2.6
	CRP10	356.91	250	250	355.39	354.16	2.8
	CRP11	355.00	250	250	353.25	352.10	2.9
	CRP12	352.39	250	250	350.60	349.34	3.1
	CRP13	349.21	250	250	347.84	346.31	2.9
	CRP14	346.09	250	250	344.81	343.34	2.8
	CRP15	343.33	250	250	341.84	340.58	2.9
	CRP16	317.97	250	250	316.45	315.42	2.6
	CRP17	314.85	250	250	312.38	310.70	4.2
	CRP18	296.26	250	250	294.78	293.53	2.6
	CRP19	299.30	250	250	297.80	296.80	2.5
	CRP20	297.78	250	250	296.26	295.26	2.6
	CRP21	296.28	250	250	294.78	293.53	2.6
	CRP22	293.65	250	250	291.88	290.00	3.6
	CRP23	288.29	250	250	286.68	285.68	2.6
	CRP24	286.56	250	250	285.04	284.01	2.6
	CRP25	285.16	250	250	283.65	282.66	2.5
	CRP26	283.15	250	250	281.63	280.63	2.5
	CRP27	281.55	250	250	280.02	279.00	2.6
	CRP28	277.50	250	250	276.01	275.75	1.8
	CRP29	276.98	250	250	275.46	274.73	2.3
	CRP30	273.77	250	250	270.86	269.85	3.9
Prlslop	CRP31	269.00	250	250	266.44	265.15	3.9
	CRP32	262.69	250	250	260.66	259.84	2.9
	CRP33	260.07	250	250	258.55	257.32	2.8
	CRP34	258.64	250	250	257.14	256.39	2.3
	CRP46	264.43	250	250	262.02	260.93	3.5
	CRP47	261.99	250	250	260.45	258.39	3.6
	CRP48	259.42	250	250	257.92	256.62	2.8
	CRP49	257.97	250	250	256.47	255.22	2.6
	CRP50	256.53	250	250	255.03	253.78	2.7
	CRP51	255.07	250	250	253.57	252.47	2.6
Dealul Mare	CRP52	253.76	250	250	252.26	251.16	2.6
	CRP53	252.19	250	250	250.69	249.79	2.4
	CRP54	250.86	250	250	249.36	248.26	2.6
	CRP55	250.09	250	250	248.59	247.79	2.3
	CRP56	247.57	250	250	246.07	244.47	3.1
	CRP57	244.44	250	250	242.94	241.94	2.5
	CRP58	259.13	250	250	257.63	256.03	3.1
	CRP59	251.56	250	250	250.06	248.26	3.3
	CRP60	297.32	250	250	294.32	292.82	4.5
	CRP61	294.02	250	250	291.02	289.42	3.6
Badea Cartan	CRP62	307.81	250	250	305.95	304.95	2.9
	CRP63	306.40	250	250	304.02	303.02	3.4
	CRP64	303.31	250	250	301.54	300.54	2.8
	CRP65	300.29	250	250	298.09	297.09	3.2
	CRP66	296.28	250	250	294.65	293.63	2.6
	CRP67	295.49	250	250	293.24	291.74	3.8
	CRP68	293.58	250	250	290.78	289.33	4.3
	CRP69	289.04	250	250	287.33	286.89	3.3
	CRP70	284.82	250	250	282.42	281.42	2.5
	CRP71	282.17	250	250	280.60	279.50	2.6
Banaduc	CRP72	277.79	250	250	276.28	274.78	3.0
	CRP73	274.56	250	250	272.93	271.31	3.3
	CRP74	271.31	250	250	269.46	268.46	2.9
	CRP75	269.37	250	250	267.44	266.42	2.9
	CRP76	264.56	250	250	263.05	262.06	2.5
	CRP77	262.30	250	250	260.78	259.76	2.5
	CRP78	306.43	250	250	304.73	304.03	2.4
	CRP79	304.06	250	250	302.56	301.56	2.9
	CRP80	301.55	250	250	300.05	299.05	2.3
	CRP81	300.67	250	250	299.17	297.07	3.6
Vulturilor	CRP82	297.13	250	250	295.63	293.83	3.3
	CRP83	294.35	250	250	292.85	290.90	3.5
	CRP84	291.52	250	250	290.02	288.22	2.3
	CRP85	289.07	250	250	287.57	286.17	2.9
	CRP86	287.43	250	250	285.93	283.63	3.8
	CRP87	270.67	250	250	269.17	267.79	2.9
	CRP88	266.24	250	250	264.08	263.64	2.6
	CRP89	303.00	250	250	300.50	299.20	2.9
	CRP90	298.32	250	250	296.82	295.02	3.3
	CRP91	295.36	250	250	293.86	292.36	3.0
Varfului	CRP92	292.63	250	250	291.13	289.93	3.7
	CRP93	282.28	250	250	280.78	278.58	3.7
	CRP94	279.46	250	250	277.96	276.16	2.9
	CRP95	277.04	250	250	275.54	274.44	2.6
	CRP96	275.68	250	250	274.18	273.08	2.6
	CRP97	274.25	250	250	272.75	271.25	3.0
	CRP98	272.09	250	250	270.59	268.79	3.3
	CRP99	269.68	250	250	268.18	267.68	2.0
	CRP100	308.12	250	250	305.47	304.82	3.3
	CRP101	305.02	250	250	303.52	302.22	2.8
Caprioara	CRP102	302.34	250	250	300.84	299.84	2.5
	CRP103	300.60	250	250	298.85	297.85	2.8
	CRP104	298.73	250	250	297.10	296.08	2.7
	CRP105	296.99	250	250	295.33	294.34	2.7
	CRP106	295.91	250	250	293.82	292.86	3.1
	CRP107	294.22	250	250	291.88	290.97	3.3
	CRP108	292.25	250	250	290.22	289.30	2.9
	CRP109	289.38	250	250	287.80	286.33	3.1
	CRP110	286.60	250	250	284.87	283.85	2.8
	CRP111	273.41	250	250	271.39	269.91	3.5
Vasile Parvan	CRP112	266.45	250	250	264.18	262.45	4.0
	CRP117	274.54	250	250	273.04	272.29	2.3
	CRP118	272.04	250	250	270.54	269.19	2.9
	CRP119	267.19	250	250	265.66	265.19	2.0
	CRP113	266.13	250	250	264.63	263.88	2.3
	CRP114	269.02	250	250	267.02	265.72	3.3
	CRP115	265.74	250	250	264.24	262.54	3.2
	CRP116	262.65	250	250	261.15	259.65	2.4
	CRP120	313.01	250	250	311.01	309.91	3.1
	CRP121	309.33	250	250	307.33	306.83	2.5
PG8	CRP122	307.96	250	250	305.96	304.86	3.1
	CRP123	305.28	250	250	303.28	302.28	3.0
	CRP124	302.95	250	250	300.95	299.25	3.7
	CRP125	299.53	250	250	297.53	296.43	3.1
	CRP126	302.87	250	250	301.32	299.82	3.1
	CRP127	300.66	250	250	298.87	297.71	3.0
	CRP128	298.17	250	250	296.66	295.62	2.6
	CRP129	296.27	250	250	294.73	293.32	2.9
	CRP130	293.75	250	250	292.17	291.20	2.6
	CRP131	305.31	250	250	303.31	302.31	3.0
PG6	CRP132	301.43	250	250	299.43	298.43	3.0
	CRP133	301.28	250	250	299.29	298.69	3.6
	CRP134	298.34	250	250	296.34	295.54	2.6
	CRP135	295.31	250	250	293.31	291.91	3.4